



**Sabah Net** Sdn. Bhd.

Formerly known as KKIPC Sdn. Bhd. (Co. No. 408443-U)

**LDAP**

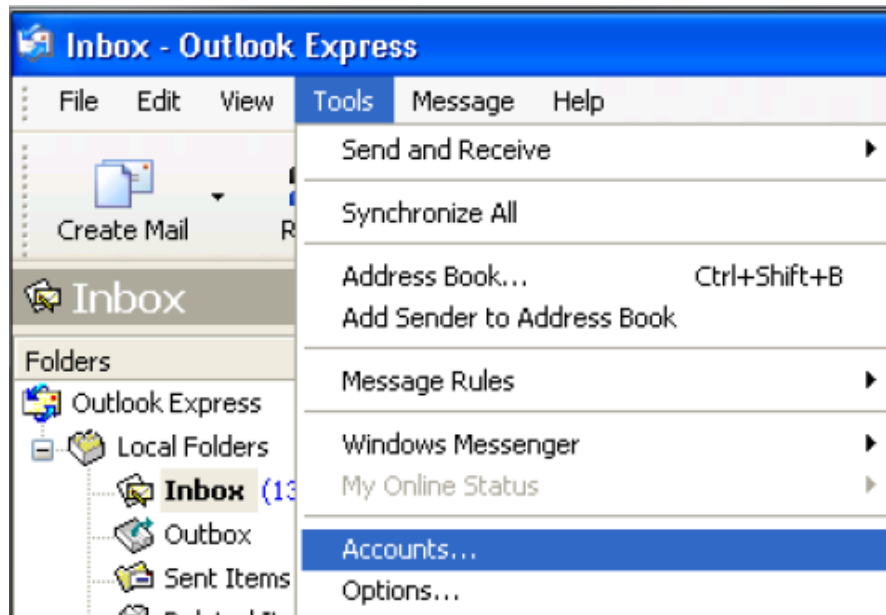
**2016**

---

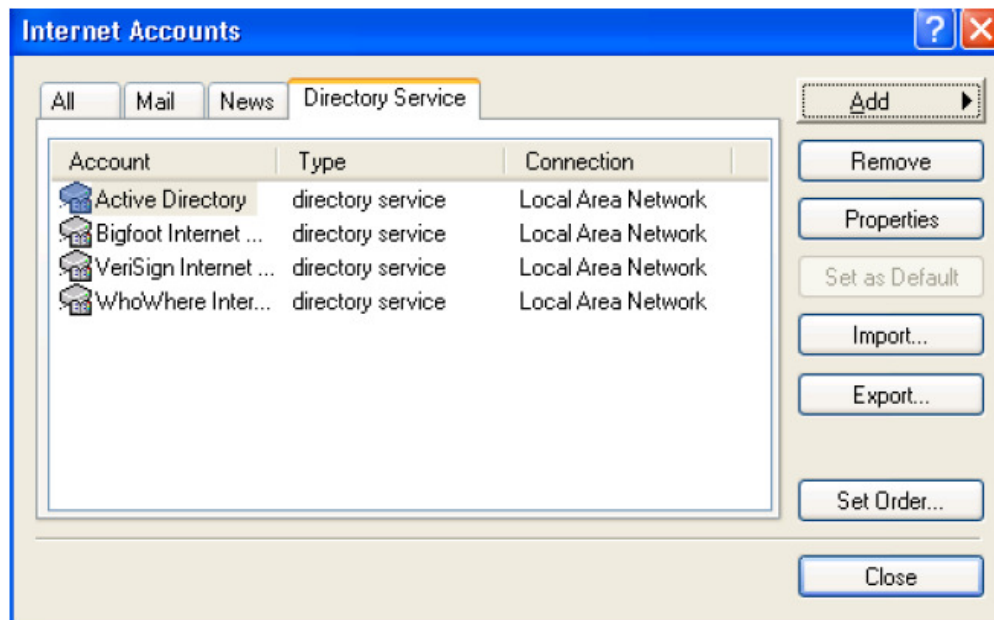
User's Guide  
For Outlook Express

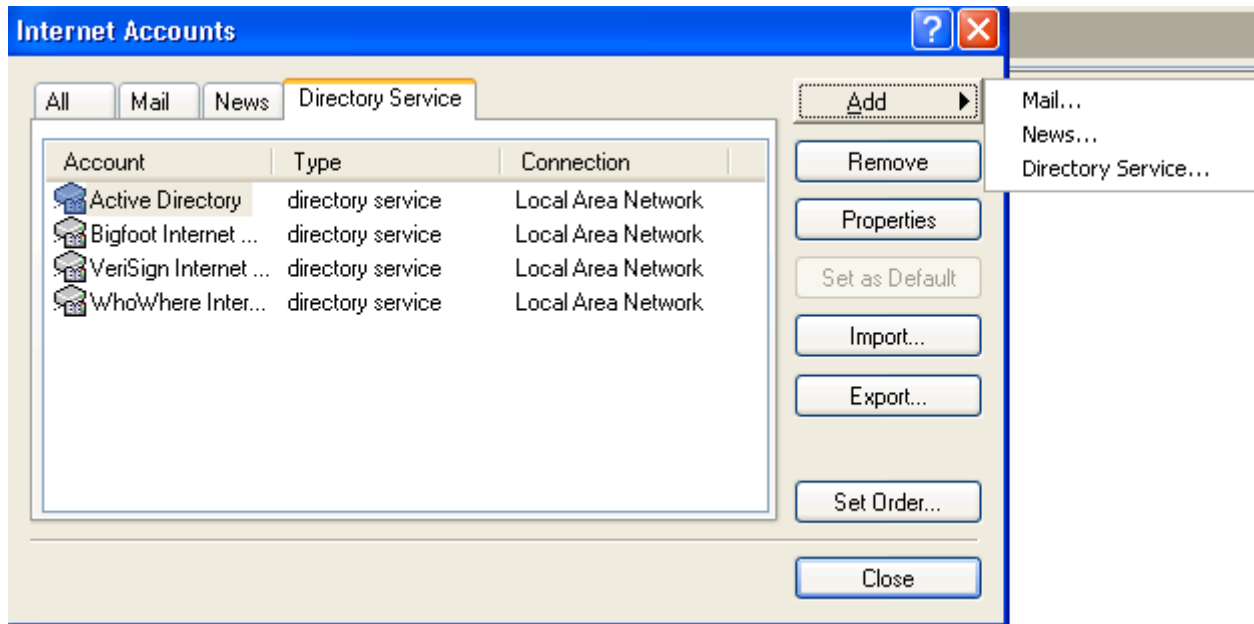
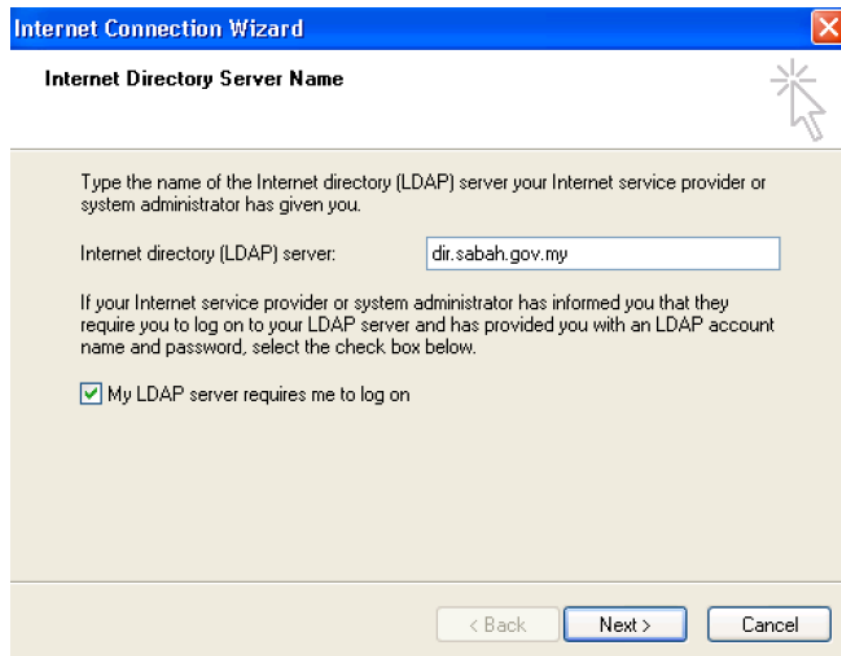
### Configuring Windows Live Mail for Contact Directory (LDAP)

1. Click start on Outlook Express
2. Click Tools and **Options** and select **Accounts**

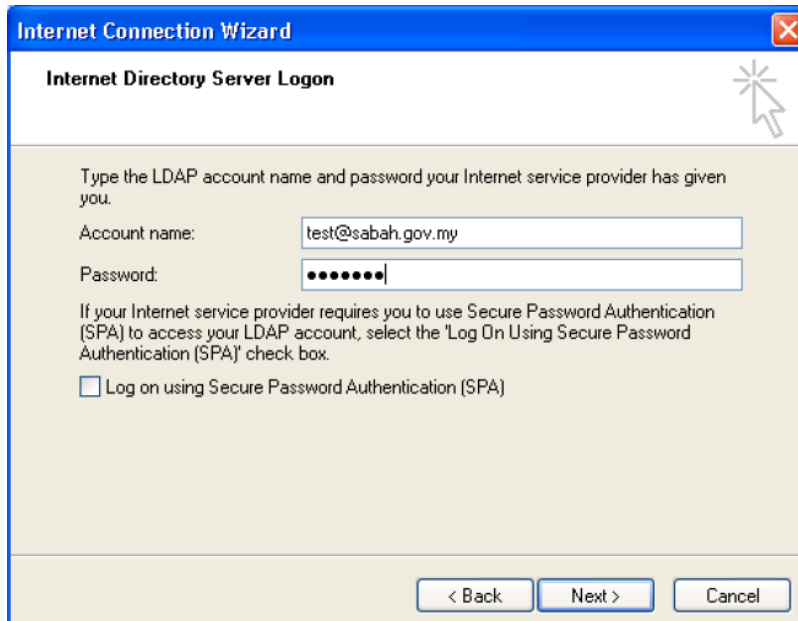


3. On Internet **Accounts** select **Directory Service** tab.



4. Click **add** select **Directory Service**5. Enter **Internet Directory** field : **dir.sabah.gov.my** and tick **My LDAP server requires me to log on** then **Next**.

6. In the **Account name**: enter username and password (**Sabah.gov.my username**) and click **Next**



The screenshot shows the 'Internet Connection Wizard' window with the title 'Internet Directory Server Logon'. The window contains the following text and controls:

Type the LDAP account name and password your Internet service provider has given you.

Account name:

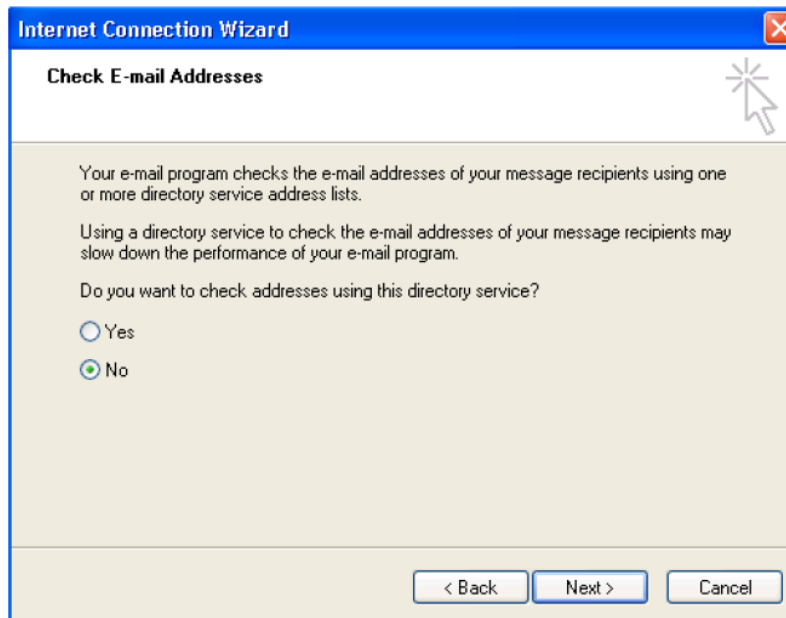
Password:

If your Internet service provider requires you to use Secure Password Authentication (SPA) to access your LDAP account, select the 'Log On Using Secure Password Authentication (SPA)' check box.

Log on using Secure Password Authentication (SPA)

At the bottom of the window are three buttons: '< Back', 'Next >', and 'Cancel'.

7. Select **No** for **Check E-mail Address** then **Next**.



The screenshot shows the 'Internet Connection Wizard' window with the title 'Check E-mail Addresses'. The window contains the following text and controls:

Your e-mail program checks the e-mail addresses of your message recipients using one or more directory service address lists.

Using a directory service to check the e-mail addresses of your message recipients may slow down the performance of your e-mail program.

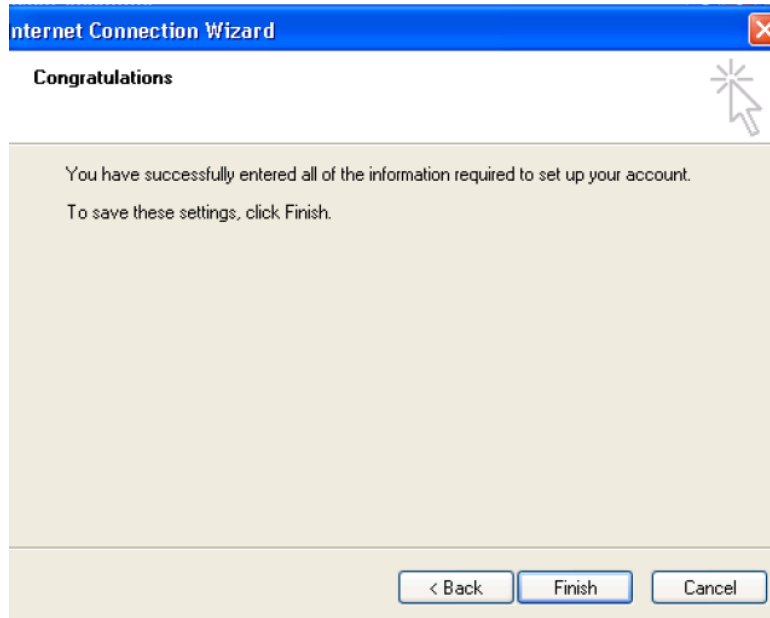
Do you want to check addresses using this directory service?

Yes

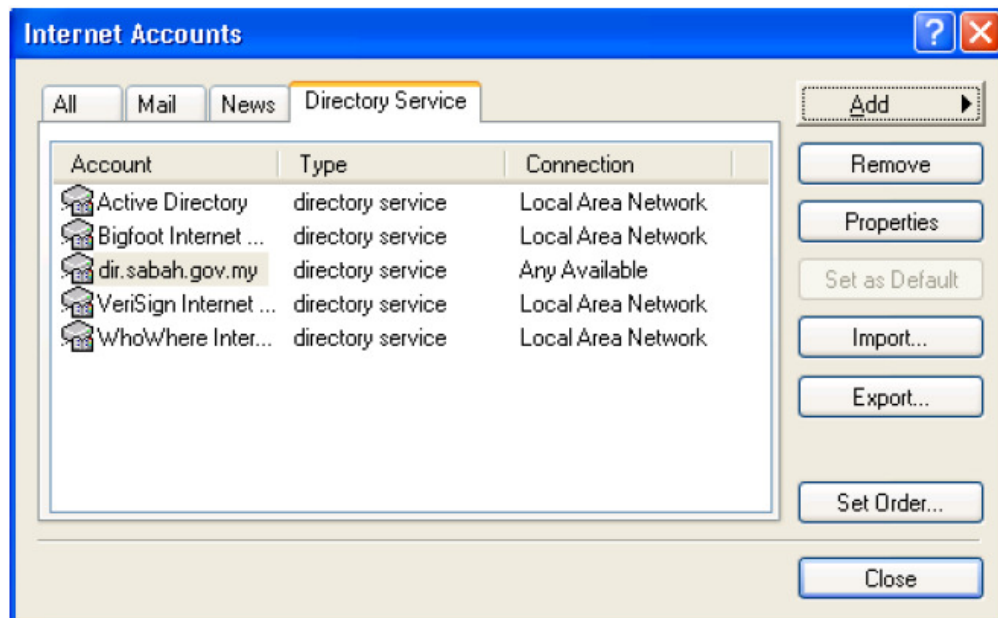
No

At the bottom of the window are three buttons: '< Back', 'Next >', and 'Cancel'.

## 8. Finish.



## 9. After finish, On **Contact Directory** select **dir.sabah.gov.my** and click **Properties**.



10. On dir.sabah.gov.my **Properties** click **Advanced** tab In the Search base field enter : **OU=Groups,OU=Sabah,DC=sabah,DC=gov,DC=my** and apply

